

HOLP CONSTRUCTION, INC.

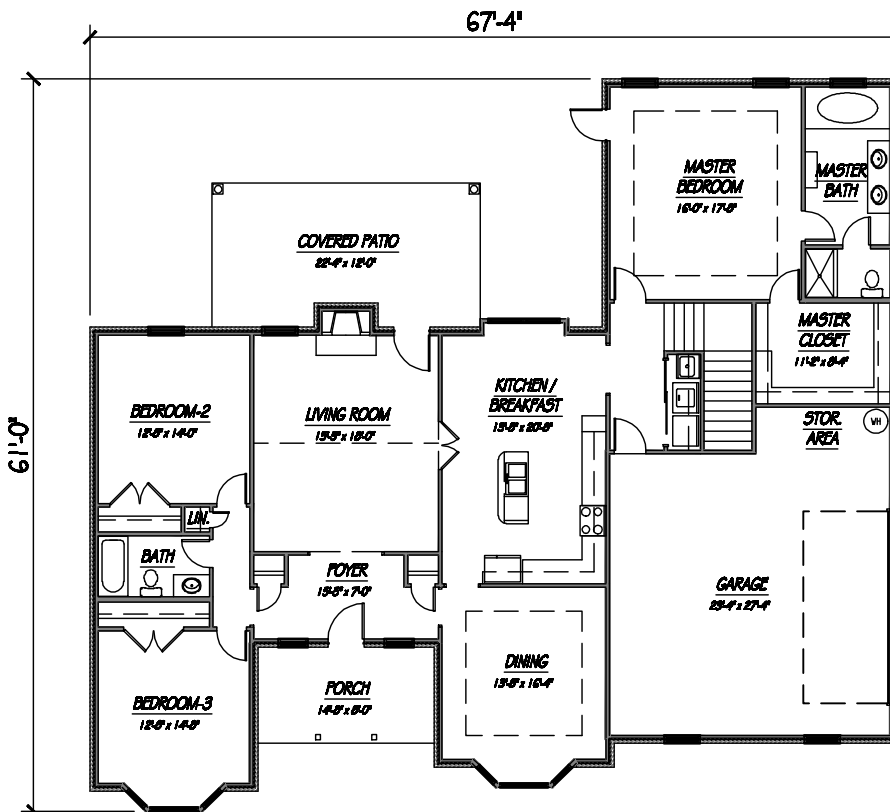
(865) 977-1905 or (865) 640-6052



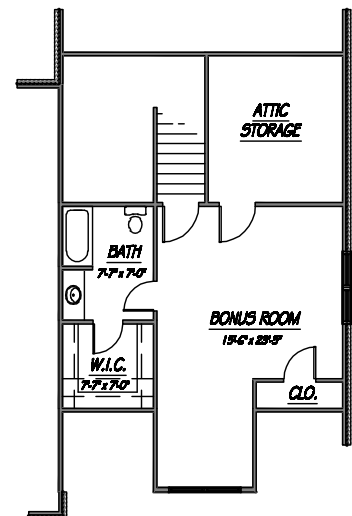
FRONT ELEVATION

Features:

- 2,179 total square feet of living area main level
- Open floor plan has a living room with a cathedral ceiling, fireplace, double french doors into kitchen / breakfast area.
- Master bath features jacuzzi tub with double vanity and large walk-in closet.
- Bonus room above has a private stairway and bathroom. Approx. 475 square feet of living area.
- 3 bedrooms, 3 baths, 2-car garage with side entry.
- Alarm system, central vacuum, bonus room wired for surround sound.
- One acre lot
- Price: \$369,900



MAIN FLOOR



BONUS ROOM